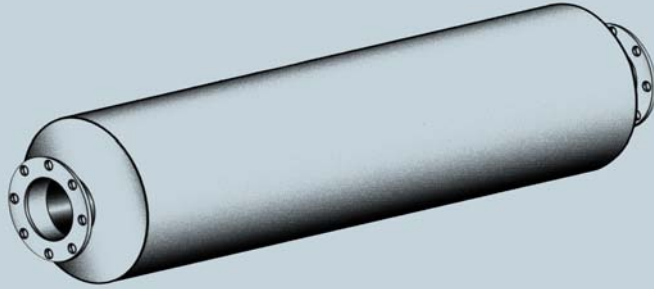


ENGINE EXHAUST SILENCERS

PHILLIPS & TEMRO
industries®

MANUFACTURER OF  SILENCERS AND ACCESSORIES

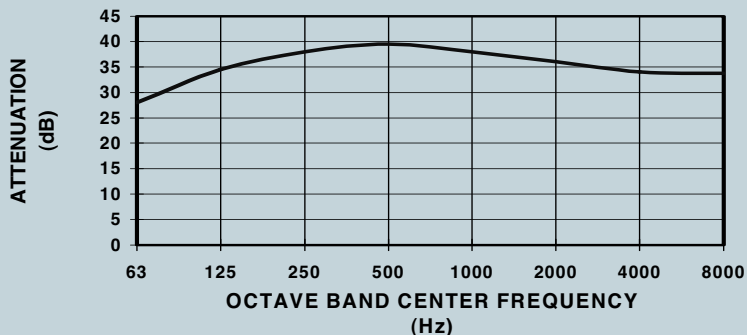


Standard Silencer Application

Heavy-duty hospital grade series silencer designed for heavy duty stationary, marine systems and mobile power units. JH series silencers provide premium level of silencing for use in low-ambient noise area where critical grade silencer is not sufficient.

Average Attenuation 35-40 dB

REPRESENTATIVE ATTENUATION CURVE
FOR "JH" SERIES SILENCER



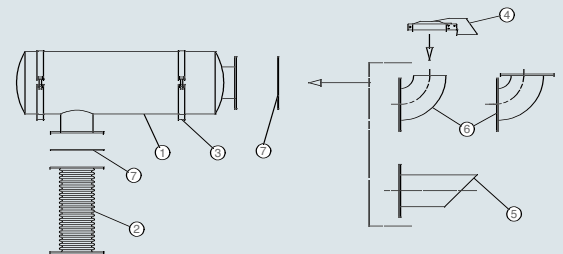
MODEL JH SERIES: HOSPITAL GRADE

Standard Construction Features

- Aluminized steel standard for silencers up to 26 inch body diameter
- Silencers larger than 28 inch body diameter standard carbon steel
- All welded steel construction
- Can be mounted vertically or horizontally
- High temperature (1000° F.) satin black finish
- Drain port
- NPT inlet and discharge connections on sizes 2 inch to 3.5 inch
- 125/150# ANSI drilled plate flanges on inlet and discharge of silencers 4 inch and larger
- Multi-chamber design
- Effectively attenuates the full range of sound frequencies

Optional Construction Features and Accessories

- Stainless steel construction
- Special inlet and outlet connections
- Special inlet and outlet locations
- Vertical mounting legs
- Horizontal mounting saddles
- Mounting bands
- Horizontal and vertical shell legs
- Special acoustical designs
- Inspection openings
- Air leak tests
- Complete line of engine exhaust accessories

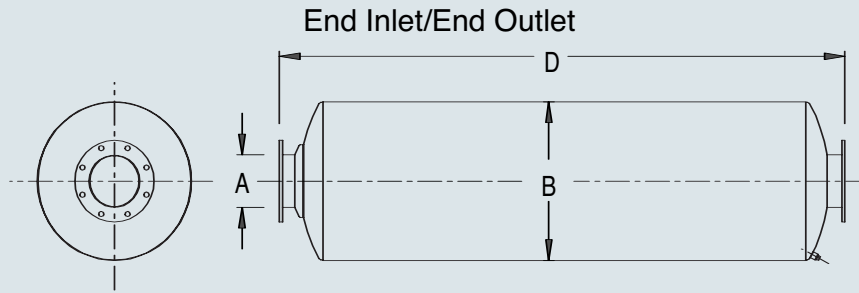


Engine Exhaust Silencer & Accessories:

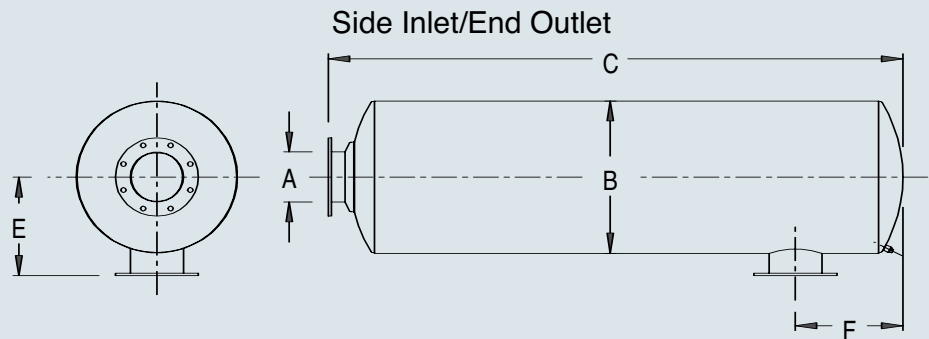
- | | |
|-------------------|--------------------|
| 1. Silencer | 5. Mitered Exhaust |
| 2. Flex Connector | 6. Elbows |
| 3. Mounting Band | 7. Flange / Gasket |
| 4. Rain Cap | |

ENGINE EXHAUST SILENCERS

MODEL JH SERIES HOSPITAL GRADE



2 inch to 3 1/2 inch standard with male NPT connections; 4 inch and larger standard with 125/150# ANSI drilled plate flange connections.



End Inlet/End Outlet

Side Inlet/End Outlet

Part Number	A	B	D	WT
JHE-02-105030	2	10	44	55
JHE-25-105031	2.5	12	46	75
JHE-03-105032	3	12	46	75
JHE-35-105033	3.5	14	60	110
JHE-04-105034	4	14	60	115
JHE-05-105035	5	18	68	180
JHE-06-105036	6	18	68	185
JHE-08-105037	8	26	96	460
JHE-10-105038	10	30	110	680
JHE-12-105039	12	36	126	855
JHE-14-105040	14	42	138	1370
JHE-16-105041	16	42	162	1600
JHE-18-105042	18	48	205.5	2650
JHE-20-105051	20	60	220	4500

Part Number	A	B	C	E	F	WT
JHS-02-205170	2	10	41.5	8.5	5.5	55
JHS-25-205171	2.5	12	42.5	10	7.75	75
JHS-03-205172	3	12	42.5	10	7.75	75
JHS-35-205173	3.5	14	56.5	11	9.5	110
JHS-04-205174	4	14	56.5	11	9.5	115
JHS-05-205175	5	18	66.5	13	10.5	180
JHS-06-205176	6	18	66.5	13	10.5	185
JHS-08-205177	8	26	93.5	17	17.5	460
JHS-10-205178	10	30	108	19	20	680
JHS-12-205179	12	36	122	22	23	855
JHS-14-205180	14	42	135	25	24	1370
JHS-16-205181	16	42	159	25	28	1600
JHS-18-205182	18	48	201.5	28	38	2650
JHS-20-205219	20	60	216	34	40	4500

• Larger sizes available upon request.

Dimensions in inches, weights in pounds. Dimensions and weights are nominal and may vary slightly with production models. Request certified drawings for exact dimensions.

Custom sizing available for specific applications

Phillips & Temro Industries, Inc.

Silencer Division • Prior Lake MN 55372 • (952) 440-9200 • Fax: (952) 440-3400 • E-mail: sales@phillipsandtemro.com

www.phillipsandtemro.com