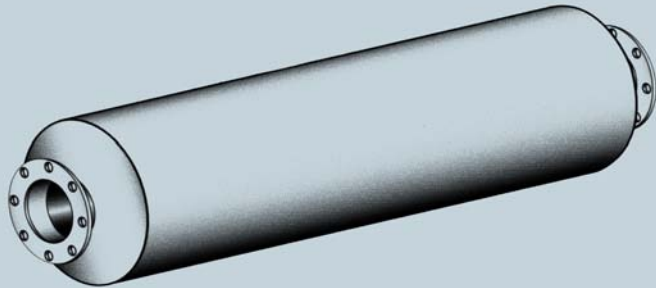


ENGINE EXHAUST SILENCERS

PHILLIPS & TEMRO
industries®

MANUFACTURER OF  SILENCERS AND ACCESSORIES

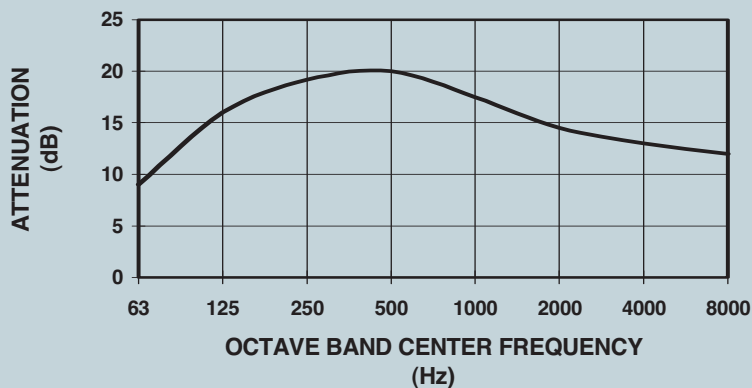


Standard Silencer Application

Heavy-duty industrial grade series silencer designed for heavy duty stationary, marine systems and mobile power units. JI series silencers provide sufficient degree of silencing for commercial or industrial areas where ambient noise is relatively high.

Average Attenuation 12-18 dB

REPRESENTATIVE ATTENUATION CURVE
FOR "JI" SERIES SILENCER



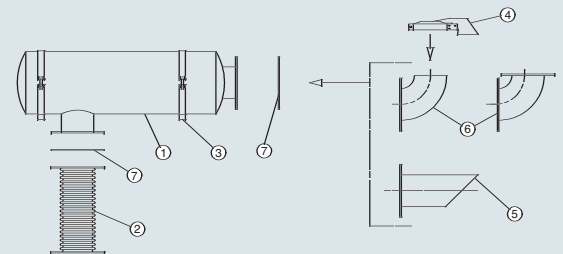
MODEL JI SERIES: INDUSTRIAL GRADE

Standard Construction Features

- Aluminized steel standard for silencers up to 26 inch body diameter
- Silencers larger than 28 inch body diameter standard carbon steel
- All welded steel construction
- Can be mounted vertically or horizontally
- High temperature (1000° F.) satin black finish
- Drain port
- NPT inlet and discharge connections on sizes 2 inch to 3.5 inch
- 125/150# ANSI drilled plate flanges on inlet and discharge of silencers 4 inch and larger
- Two-chamber design

Optional Construction Features and Accessories

- Stainless steel construction
- Special inlet and outlet connections
- Special inlet and outlet locations
- Vertical mounting legs
- Horizontal mounting saddles
- Mounting bands
- Horizontal and vertical shell legs
- Special acoustical designs
- Inspection openings
- Air leak tests
- Complete line of engine exhaust accessories

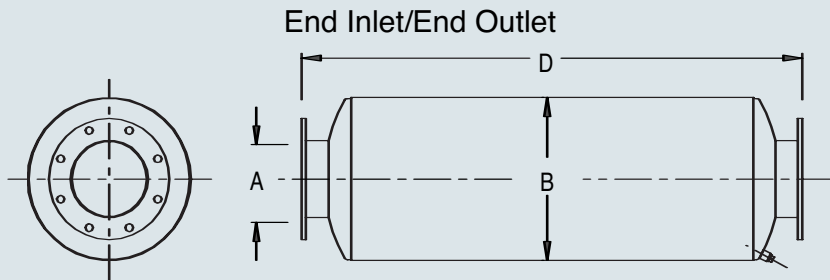


Engine Exhaust Silencer & Accessories:

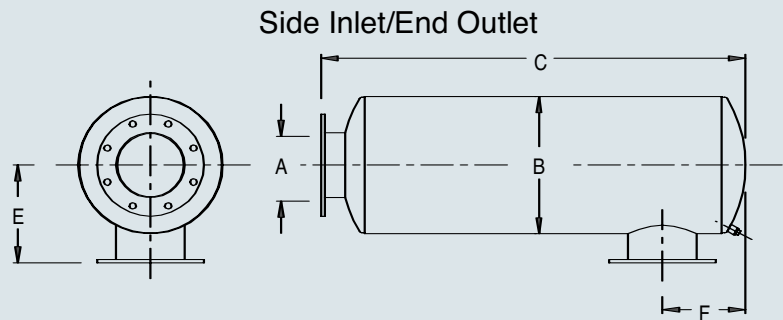
- | | |
|-------------------|--------------------|
| 1. Silencer | 5. Mitered Exhaust |
| 2. Flex Connector | 6. Elbows |
| 3. Mounting Band | 7. Flange / Gasket |
| 4. Rain Cap | |

ENGINE EXHAUST SILENCERS

MODEL JI SERIES INDUSTRIAL GRADE



2 inch to 3 1/2 inch standard with male NPT connections; 4 inch and larger standard with 125/150# ANSI drilled plate flange connections.



End Inlet/End Outlet

Part Number	A	B	D	WT
JIE-02-300060	2	6	24	12
JIE-25-300061	2.5	8	24	18
JIE-03-300062	3	8	25	20
JIE-35-300063	3.5	10	31	30
JIE-04-300064	4	10	32	31
JIE-05-300065	5	12	44	45
JIE-06-300066	6	12	44	50
JIE-08-300067	8	18	56	120
JIE-10-300068	10	22	72	180
JIE-12-300069	12	26	72	250
JIE-14-300070	14	30	84	375
JIE-16-300071	16	36	100	470
JIE-18-300072	18	42	104	1155
JIE-20-300073	20	48	103	1360

Side Inlet/End Outlet

Part Number	A	B	C	E	F	WT
JIS-02-400090	2	6	22	5.5	3.0	12
JIS-25-400091	2.5	8	22	6.5	3.7	18
JIS-03-400092	3	8	22	7	4.2	20
JIS-35-400093	3.5	10	29	8	5	30
JIS-04-400094	4	10	29.5	8.5	5.5	31
JIS-05-400095	5	12	41.6	10	7.6	50
JIS-06-400096	6	12	41.6	10	7.6	50
JIS-08-400097	8	18	54.5	13	10.5	120
JIS-10-400098	10	22	69	15	15	180
JIS-12-400099	12	26	69.5	17	17	250
JIS-14-400100	14	30	82	19	20	375
JIS-16-400101	16	36	97	22	23	470
JIS-18-400102	18	42	101	25	26.5	1155
JIS-20-400103	20	48	101.5	28	26	1360

• Larger sizes available upon request.

Dimensions in inches, weights in pounds. Dimensions and weights are nominal and may vary slightly with production models. Request certified drawings for exact dimensions.

Custom sizing available for specific applications

Phillips & Temro Industries, Inc.

Silencer Division • Prior Lake MN 55372 • (952) 440-9200 • Fax: (952) 440-3400 • E-mail: sales@phillipsandtemro.com

www.phillipsandtemro.com