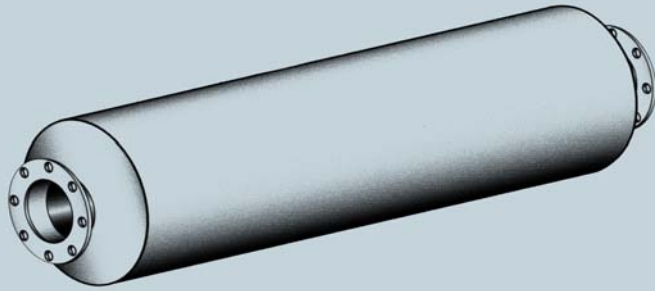


ENGINE EXHAUST SILENCERS

PHILLIPS & TEMRO
industries®

MANUFACTURER OF  SILENCERS AND ACCESSORIES

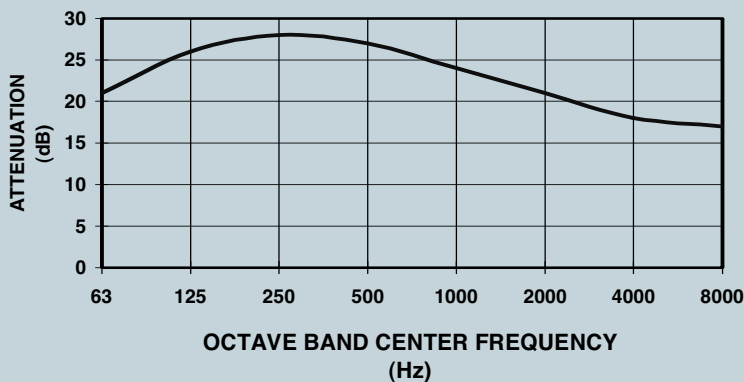


Standard Silencer Application

Heavy-duty residential grade series silencer designed for heavy duty stationary, marine systems and mobile power units. JR series silencers provide a moderate degree of silencing for use in areas that require more than industrial grade silencing.

Average Attenuation 18-25 dB

REPRESENTATIVE ATTENUATION CURVE
FOR "JR" SERIES SILENCER



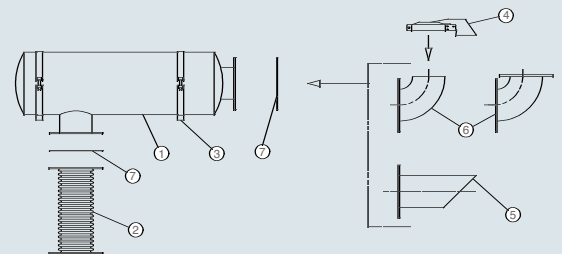
MODEL JR SERIES: RESIDENTIAL GRADE

Standard Construction Features

- Aluminized steel standard for silencers up to 26 inch body diameter
- Silencers larger than 28 inch body diameter standard carbon steel
- All welded steel construction
- Can be mounted vertically or horizontally
- High temperature (1000° F.) satin black finish
- Drain port
- NPT inlet and discharge connections on sizes 2 inch to 3.5 inch
- 125/150# ANSI drilled plate flanges on inlet and discharge of silencers 4 inch and larger
- Two-chamber design

Optional Construction Features and Accessories

- Stainless steel and construction
- Special inlet and outlet connections
- Special inlet and outlet locations
- Vertical mounting legs
- Horizontal mounting saddles
- Mounting bands
- Horizontal and vertical shell legs
- Special acoustical designs
- Inspection openings
- Air leak tests
- Complete line of engine exhaust accessories

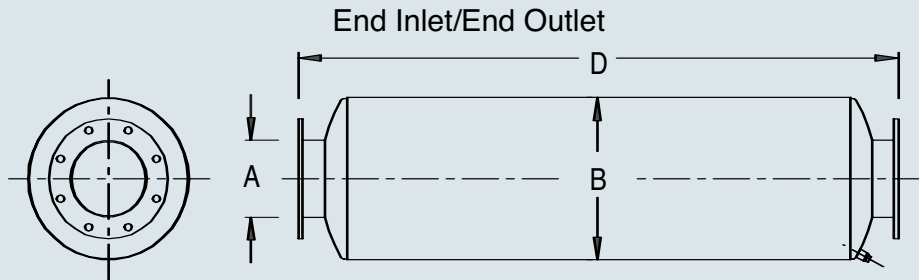


Engine Exhaust Silencer & Accessories:

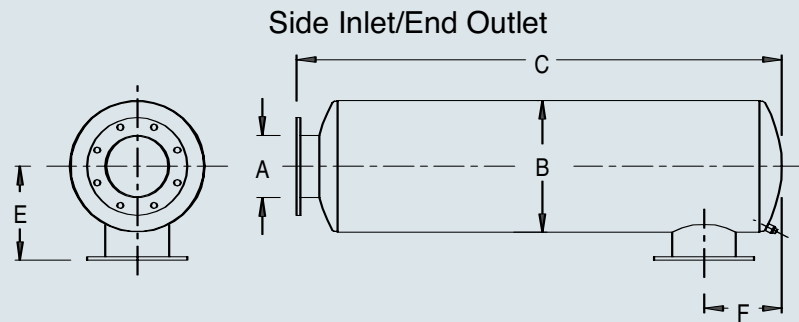
- | | |
|-------------------|--------------------|
| 1. Silencer | 5. Mitered Exhaust |
| 2. Flex Connector | 6. Elbows |
| 3. Mounting Band | 7. Flange / Gasket |
| 4. Rain Cap | |

ENGINE EXHAUST SILENCERS

MODEL JR SERIES RESIDENTIAL GRADE



2 inch to 3 1/2 inch standard with male NPT connections; 4 inch and larger standard with 125/150# ANSI drilled plate flange connections.



End Inlet/End Outlet

Part Number	A	B	D	WT
JRE-02-500071	2	6	30	17
JRE-25-500072	2.5	8	30	24
JRE-03-500073	3	8	31	26
JRE-35-500074	3.5	10	43	42
JRE-04-500075	4	10	44	44
JRE-05-500076	5	12	56	75
JRE-06-500077	6	12	56	75
JRE-08-500078	8	18	68	155
JRE-10-500079	10	22	84	220
JRE-12-500080	12	26	96	325
JRE-14-500081	14	30	120	505
JRE-16-500082	16	36	136	870
JRE-18-500083	18	42	138	1280
JRE-20-500084	20	48	143	1700

Side Inlet/End Outlet

Part Number	A	B	C	E	F	WT
JRS-02-600181	2	6	28	5.5	3	17
JRS-25-600182	2.5	8	28.5	6.5	3.6	24
JRS-03-600183	3	8	29	7	4.1	26
JRS-35-600184	3.5	10	41	8	5	42
JRS-04-600185	4	10	41.5	8.5	5.5	44
JRS-05-600186	5	12	54	10	6.6	75
JRS-06-600187	6	12	54	10	7.6	75
JRS-08-600188	8	18	66.5	13	10.5	155
JRS-10-600189	10	22	81	15	15	220
JRS-12-600190	12	26	93.5	17	17.5	325
JRS-14-600191	14	30	118	19	20	505
JRS-16-600192	16	36	133	22	23	870
JRS-18-600193	18	42	135.5	25	31.5	1280
JRS-20-600211	20	48	139	28	35	1700

• Larger sizes available upon request.

Dimensions in inches, weights in pounds. Dimensions and weights are nominal and may vary slightly with production models. Request certified drawings for exact dimensions.

Custom sizing available for specific applications

Phillips & Temro Industries, Inc.

Silencer Division • Prior Lake MN 55372 • (952) 440-9200 • Fax: (952) 440-3400 • E-mail: sales@phillipsandtemro.com

www.phillipsandtemro.com